

D.

PRIVATE ROAD NETWORK DRAWINGS FOR PALOMINO MAJOR PLAT, PHASE 3

Prepared By

WESTERN PACIFIC ENGINEERING & SURVEY



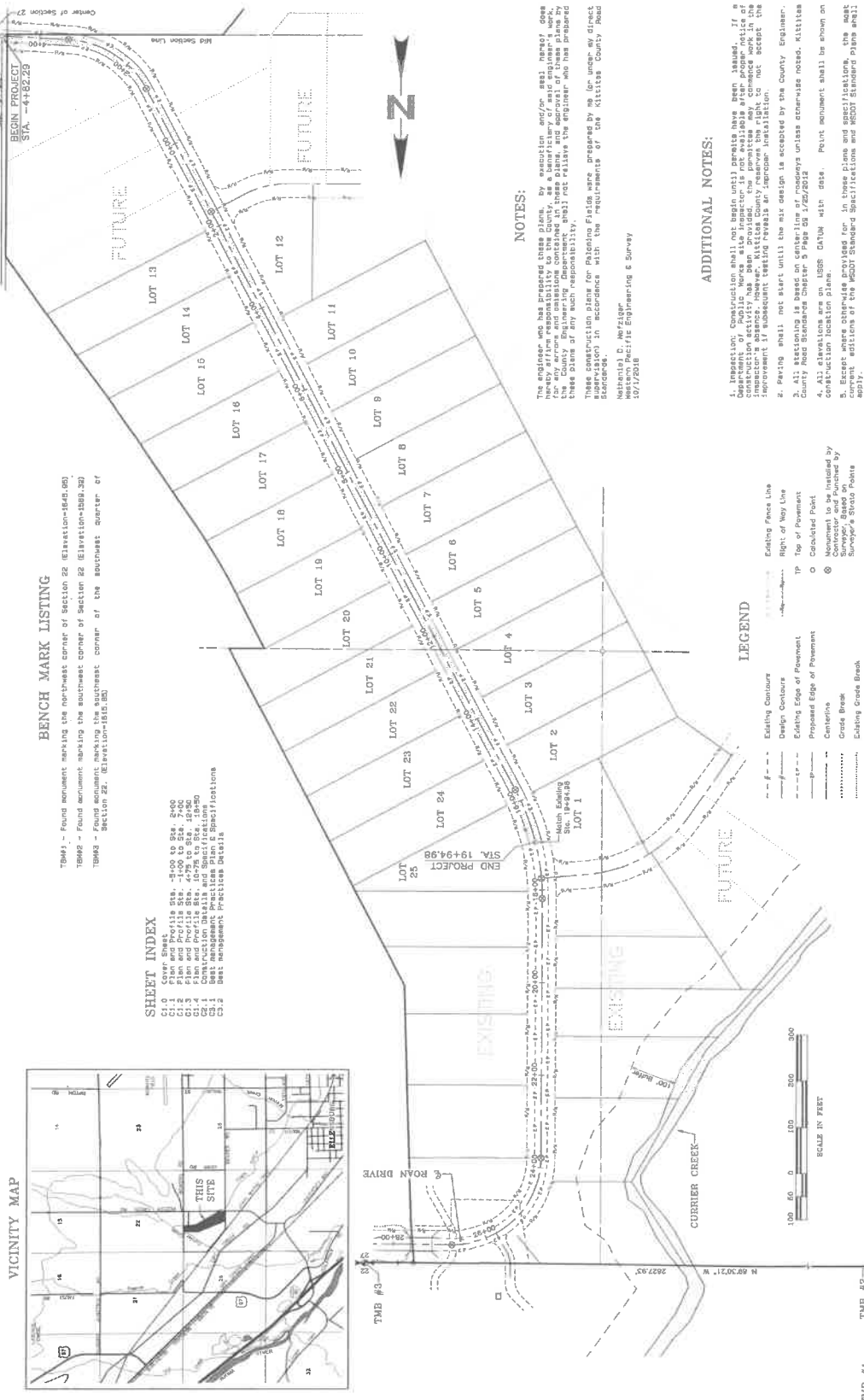
WESTERN PACIFIC ENGINEERING & SURVEY
 A TRUCK OPERATOR SERVICE CORPORATION
 1222 E. Ruxley Place, Bessie Lake, Washington
 (509)755-1023 (509)755-1288
 (509)755-1023 (509)755-1288

No.	Revision	Date	By

LCU, INC., PALOMINO MAJOR PLAT, PHASE 3 ROAN DRIVE IMPROVEMENTS Cover Sheet

Prepared by: TDR
 Checked by: JON/AMM
 Project No.: 18119
 Date: October 2018
 Scale: 1" = 100'
 Date: 10/18/18

SHEET NO. C1.0
 181827



BENCH MARK LISTING

TBM#1 - Found monument marking the northeast corner of Section 22 (Elevation=1845.06)

TBM#2 - Found monument marking the southeast corner of Section 22 (Elevation=1889.39)

TBM#3 - Found monument marking the southeast corner of the southeast quarter of Section 22. (Elevation=1816.00)

SHEET INDEX

C1.0 Cover Sheet

C1.1 Plan and Profile 518 - 5100 to 528, 2400

C1.2 Plan and Profile 518 - 1400 to 528, 2700

C1.3 Plan and Profile 518 - 1400 to 528, 2700

C1.4 Construction Details and Specifications

C2.1 Best Management Practices Details

C2.2 Best Management Practices Details

C2.3 Best Management Practices Details

LEGEND

- Existing Contour
- Design Contour
- Existing Edge of Pavement
- Proposed Edge of Pavement
- Centerline
- Grade Break
- Existing Cross Break
- Existing Fence Line
- Right of Way Line
- Tip of Pavement
- Completed Point
- Monument to be Installed by Contractor and Furnished by Surveyor's Stake Points

NOTES:

The engineer who has prepared these plans, by accepting and/or seal hereof hereby affirms responsibility to the County, as a beneficiary of said engineer's work, to the extent that the County Engineering Department shall not allow the engineer and his/her partner, associate, or employee to accept these plans or any such responsibility.

These construction plans for Palomino Fields were prepared by me (or under my direct supervision) in accordance with the requirements of the Kittitas County Road Standards.

Nathaniel D. Metzger
 Western Pacific Engineering & Survey
 10/17/2018

ADDITIONAL NOTES:

- Inspection: Construction shall not begin until permits have been issued. Department of Public Works site inspector is not available after proper notice of inspection has been given. The permittee shall commence work in the inspection area immediately upon receipt of the permit. The permittee shall not accept the improvement if subsequent testing reveals an improper installation.
- Paving shall not start until the subgrade is accepted by the County Engineer.
- All stationing is based on centerline of roadways unless otherwise noted. Kittitas County Road Standards Chapter 5 Page 05.1/20/2012
- All elevations are on USBR DATUM with 2002. Point monument shall be shown on construction location plans.
- Surveyor's Stake Points for all bench marks and monument locations shall be shown on current editions of the RCSD Standard Specifications and RCSD Standards maps shall apply.

These plans have been reviewed by Kittitas County Department of Public Works and have been accepted for complying with the requirements of Kittitas County Road Standards.

M. A. K. C. C.
 County Engineer

Date: 10.15.18



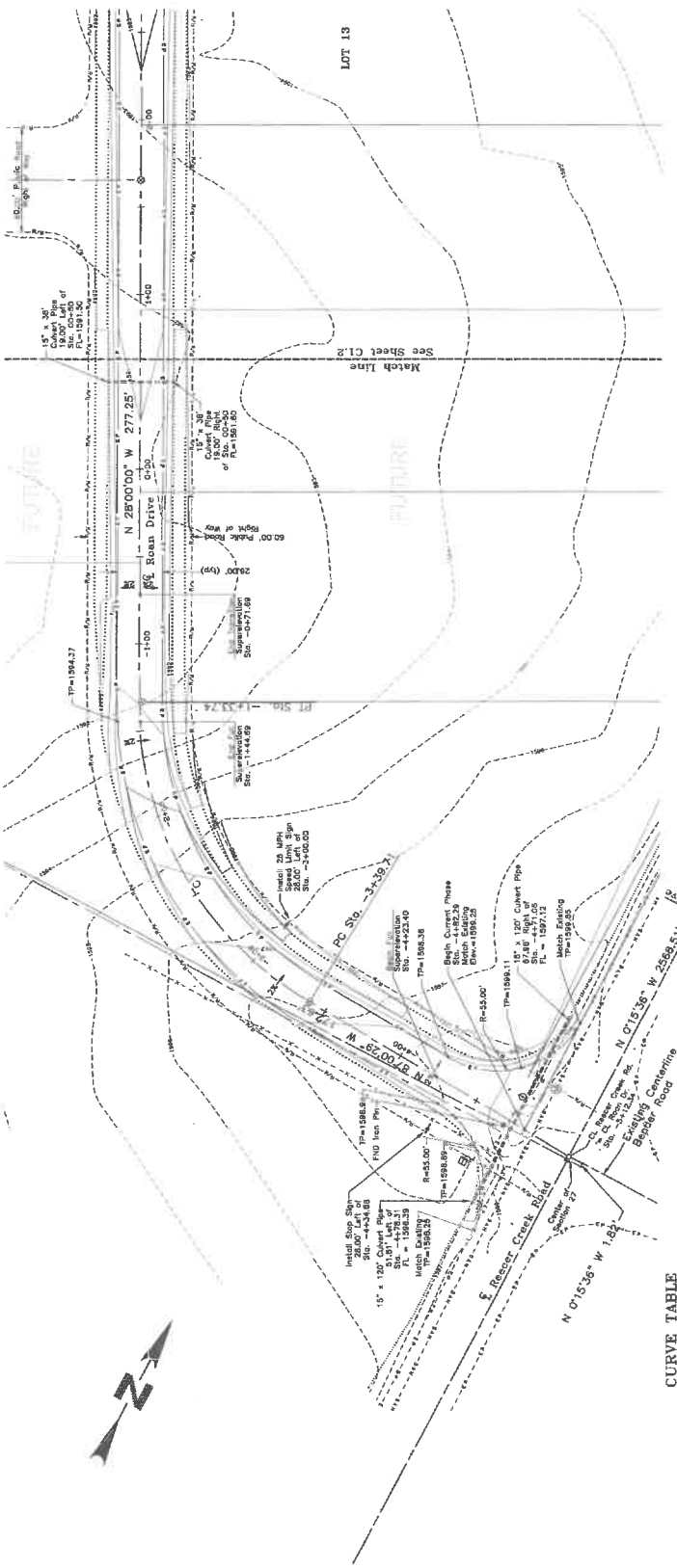
**WESTERN PACIFIC
ENGINEERING & SURVEY**
A TRSBA REGISTERED SERVICE CORPORATION
1328 E. Hunter Place, Moses Lake, Washington
1409/765-1023 1409/765-1288
Serving in Washington and Idaho

No.	Revision	Date	By

ICU, INC.
PALOMINO MAJOR PLAT, PHASE 3
ROAD DRIVE IMPROVEMENTS
Plan and Profile Sta. -5+00 to Sta. 2+00

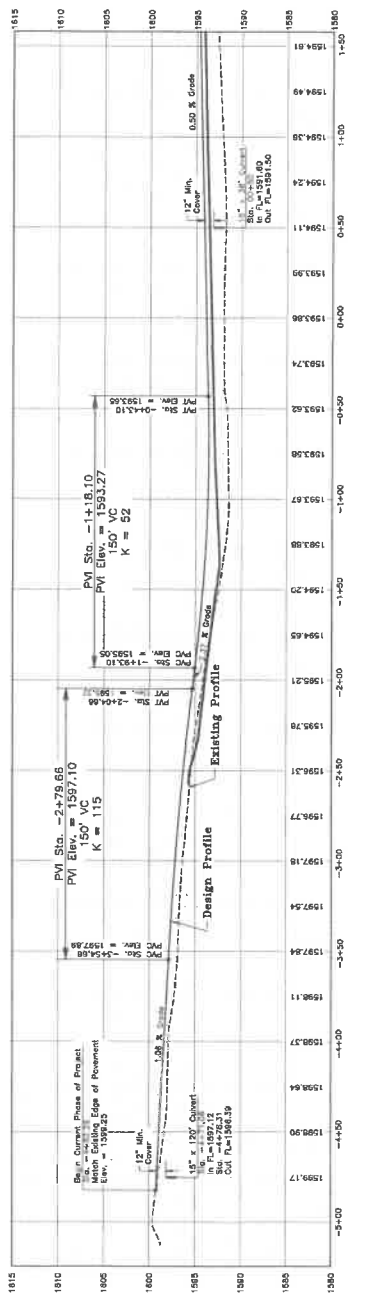
Designed by ICU
Checked by ICU
Project No. 16433
Date: October 2016
Sheet No. 1 of 3
Scale: 1" = 40'
North: 1" = 40'
Date: 27, 10 N. E. R. E.

**SHEET NO.
C1.1**
181827



CURVE TABLE

LINE	RADIUS	DELTA	ARC	CHORD	Bearing	TANGENT
C1	250.00'	57°00'30"	205.94'	N 27°30'14" W	104.69'	113.17'
C2	250.00'	57°00'30"	205.94'	N 02°30'00" W	43.67'	21.63'



9/15/16

Printed Date: 10/15/16 File Path: \\server\projects\16433\Drawings\C1.1.dwg Plot Date: 10/15/16



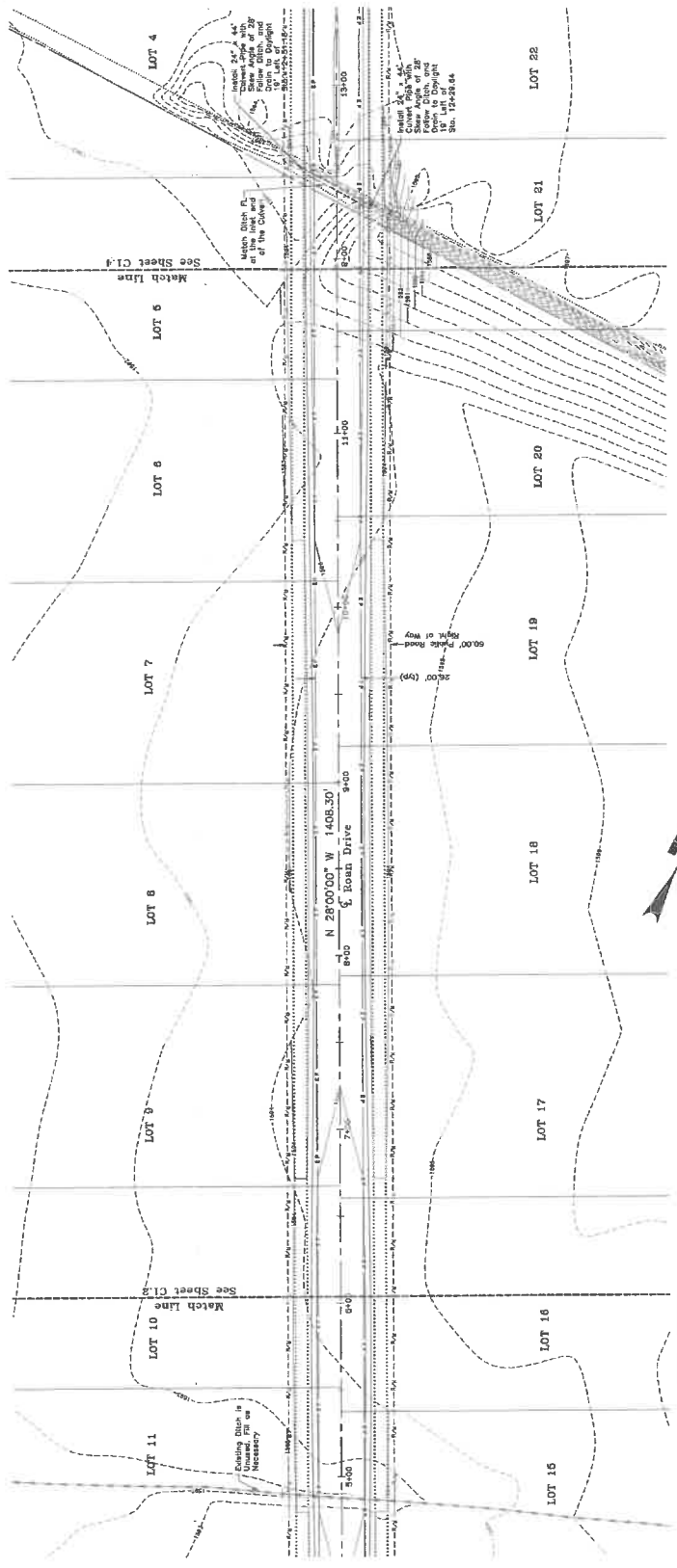
WESTERN PACIFIC
ENGINEERING & SURVEY
A TRBA DEVELOPMENT SERVICES CORPORATION
1328 E. Under Park, Moses Lake, Washington
1(509)765-1122 f(509)765-1128
Project to Washington and Idaho

No.	Revision	Date	By

LCU, INC.
PALOMINO MAJOR PLAT, PHASE 3
ROAD DRIVE IMPROVEMENTS
Plan and Profile Sta. 4+75 to Sta. 12+50
Washoe County

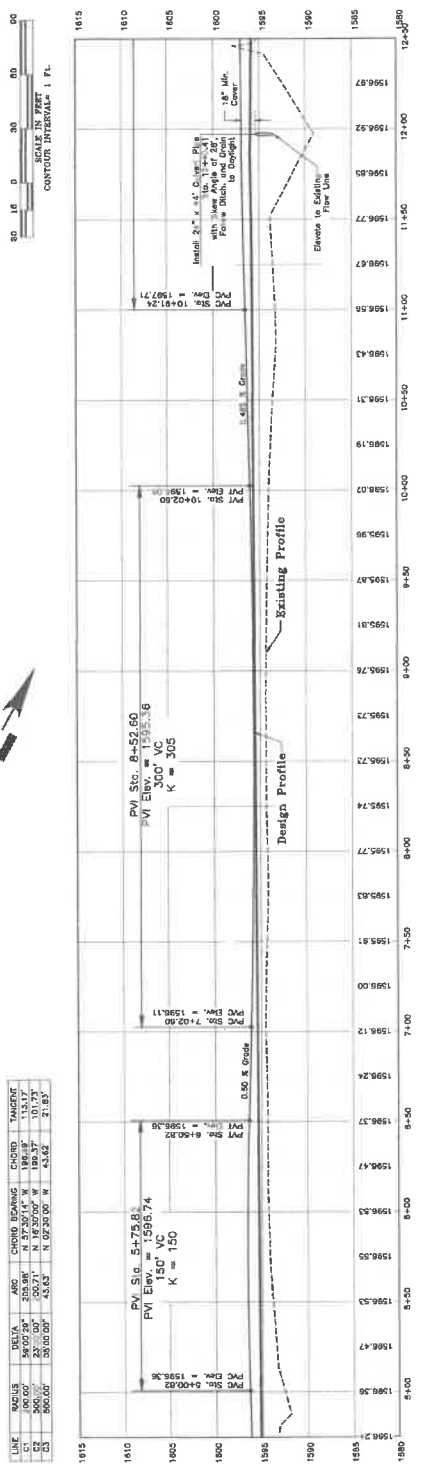
Prepared by: JDR
Drawn by: TML/AG
Checked by: JDR
Project No.: 0413
Date: October 2010
Scale: 1" = 30'
Vert. 1" = 6'
Sheet 1 of 8

SHEET NO. C1.3
181897



CURVE TABLE

LINE	ADIUS	DELTA	ARC	CHORD BEARING	CHORD	TANGENT
C1	500.00'	23.00°	200.91'	N 16.30°00' W	189.37'	10.73'
C2	500.00'	23.00°	200.91'	N 16.30°00' W	189.37'	10.73'
C3	500.00'	23.00°	200.91'	N 16.30°00' W	189.37'	10.73'



10/25/10

Project Date: October 2010 - Sta. 1 - 1" = 30' (Horizontal) / 1" = 6' (Vertical) - Date: Oct 11, 2010



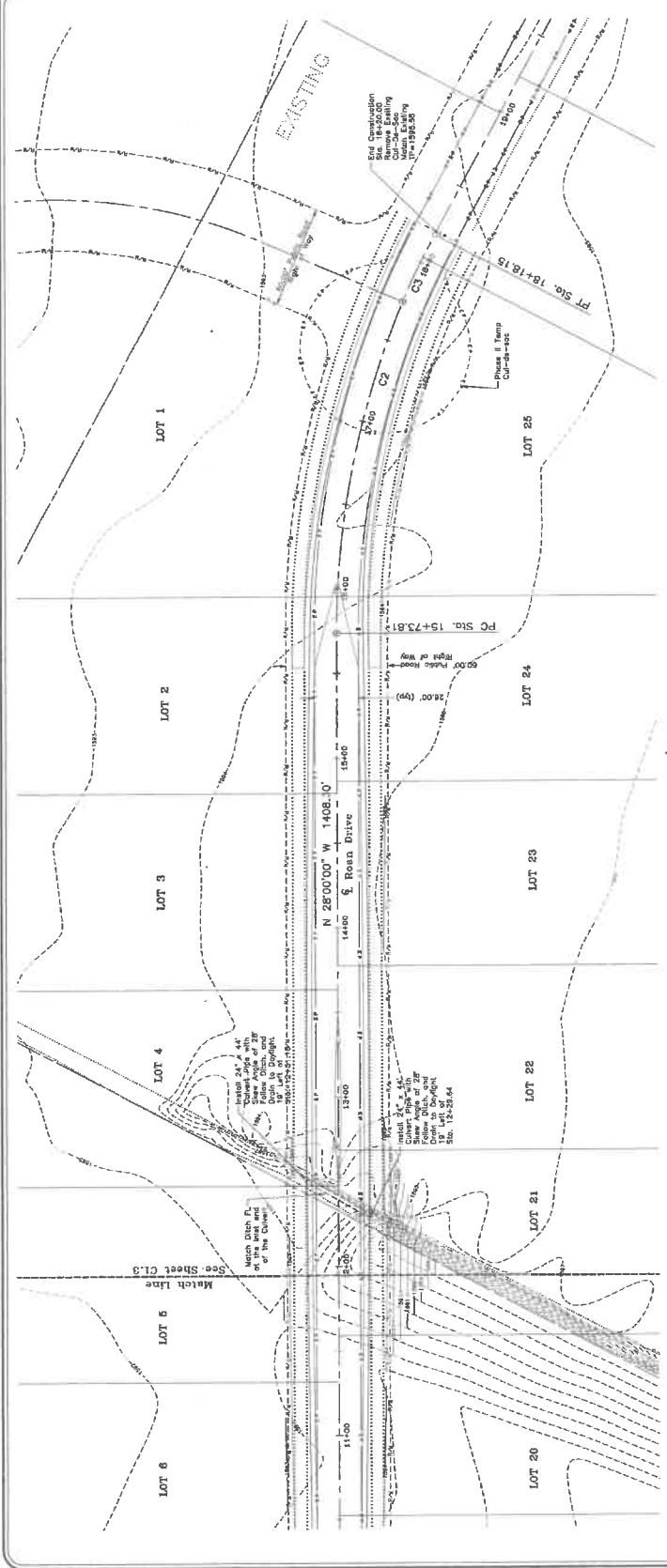
**WESTERN PACIFIC
ENGINEERING & SURVEY**
A DESIGN DEVELOPMENT SERVICES CORPORATION
1220 E. Packer Pl., Suite 200, Wallingford, WA 98148
Tel: (206) 835-1833 Fax: (206) 835-1288

No.	Position	Date	By

LCU, INC.
PALOMINO MAJOR PLAT, PHASE 3
ROAD DRIVE IMPROVEMENTS
Plan and Profile Sta. 10+76 to Sta. 18+50
Kingston, Washington

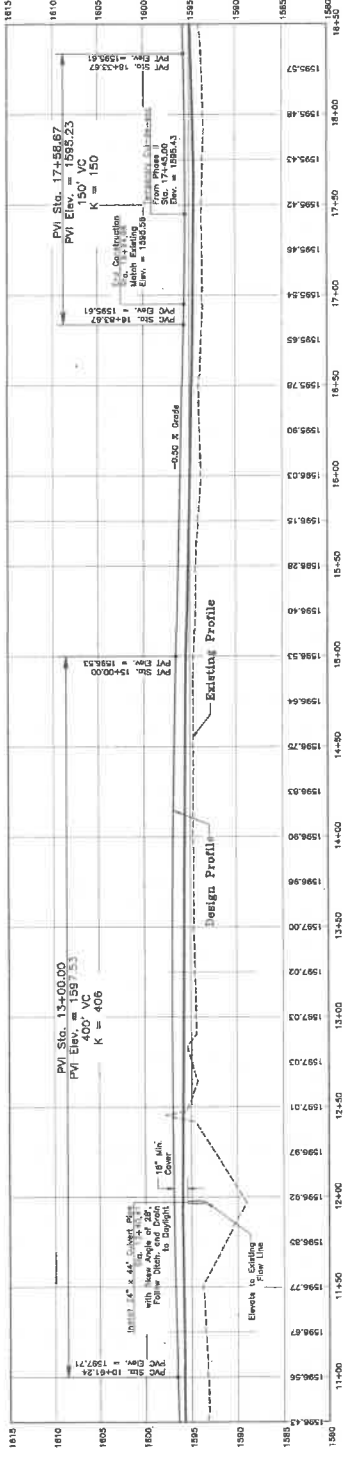
Designed by: JON
Drawn by: Tim/ACG
Checked by: JON
Date: October 2019
Scale: 1" = 40'
Sheet: 1 of 6
Sta. 27.18 N. E. 18. E

SHEET NO. C1.4
181897



CURVE TABLE

LINE	RADIUS	DELTA	ARC	TANGENT
C1	500.00'	52.00°	260.00'	130.00'
C2	500.00'	52.00°	260.00'	130.00'
C3	500.00'	52.00°	260.00'	130.00'



181897



WESTERN PACIFIC
ENGINEERING & SURVEY
A TERRA DEVELOPMENT SERVICES CORPORATION
1208 L. Ruder Plaza, West Lake, Washington
1 (509) 95-1023 F(509) 95-1298
Serves in Washington and Idaho

No.	Revision	Date	By

Kingston County
Best Management Practices
Plan and Specifications
LCU, INC.
PALOMINO MAJOR PLAT, PHASE 3

Drawn by: JON/JAG
Checked by: JON/JAG
Project No.: 1413
Date: October 2018
Scale: 1" = 30'
Sheet: 1 of 10
See: 27, 1, 4, 8, 9, 11, 12

SHEET NO.
C3.1
181027



NOTES:

1. Work Clearing Limits
The work clearing limits for the proposed road shall be established in accordance with the limits of construction shown on this drawing. All clearing shall be completed prior to the start of construction. All clearing shall be completed prior to the start of construction. All clearing shall be completed prior to the start of construction.

2. Erosion Control
Erosion control measures shall be installed in accordance with the specifications for Best Management Practices (BMP) for the project. Erosion control measures shall be installed in accordance with the specifications for Best Management Practices (BMP) for the project.

3. Sediment Control
Sediment control measures shall be installed in accordance with the specifications for Best Management Practices (BMP) for the project. Sediment control measures shall be installed in accordance with the specifications for Best Management Practices (BMP) for the project.

4. Stormwater Runoff
Stormwater runoff shall be managed in accordance with the specifications for Best Management Practices (BMP) for the project. Stormwater runoff shall be managed in accordance with the specifications for Best Management Practices (BMP) for the project.

5. Slope Stabilization
Slope stabilization measures shall be installed in accordance with the specifications for Best Management Practices (BMP) for the project. Slope stabilization measures shall be installed in accordance with the specifications for Best Management Practices (BMP) for the project.

6. Fertilizer Application
Fertilizer application shall be in accordance with the specifications for Best Management Practices (BMP) for the project. Fertilizer application shall be in accordance with the specifications for Best Management Practices (BMP) for the project.

7. Pest Control
Pest control measures shall be installed in accordance with the specifications for Best Management Practices (BMP) for the project. Pest control measures shall be installed in accordance with the specifications for Best Management Practices (BMP) for the project.

8. General Erosion Control
General erosion control measures shall be installed in accordance with the specifications for Best Management Practices (BMP) for the project. General erosion control measures shall be installed in accordance with the specifications for Best Management Practices (BMP) for the project.

9. Stormwater Runoff
Stormwater runoff shall be managed in accordance with the specifications for Best Management Practices (BMP) for the project. Stormwater runoff shall be managed in accordance with the specifications for Best Management Practices (BMP) for the project.

10. Slope Stabilization
Slope stabilization measures shall be installed in accordance with the specifications for Best Management Practices (BMP) for the project. Slope stabilization measures shall be installed in accordance with the specifications for Best Management Practices (BMP) for the project.

11. Fertilizer Application
Fertilizer application shall be in accordance with the specifications for Best Management Practices (BMP) for the project. Fertilizer application shall be in accordance with the specifications for Best Management Practices (BMP) for the project.

12. Pest Control
Pest control measures shall be installed in accordance with the specifications for Best Management Practices (BMP) for the project. Pest control measures shall be installed in accordance with the specifications for Best Management Practices (BMP) for the project.

13. Erosion Control
Erosion control measures shall be installed in accordance with the specifications for Best Management Practices (BMP) for the project. Erosion control measures shall be installed in accordance with the specifications for Best Management Practices (BMP) for the project.

14. Sediment Control
Sediment control measures shall be installed in accordance with the specifications for Best Management Practices (BMP) for the project. Sediment control measures shall be installed in accordance with the specifications for Best Management Practices (BMP) for the project.

15. Stormwater Runoff
Stormwater runoff shall be managed in accordance with the specifications for Best Management Practices (BMP) for the project. Stormwater runoff shall be managed in accordance with the specifications for Best Management Practices (BMP) for the project.

16. Slope Stabilization
Slope stabilization measures shall be installed in accordance with the specifications for Best Management Practices (BMP) for the project. Slope stabilization measures shall be installed in accordance with the specifications for Best Management Practices (BMP) for the project.

17. Fertilizer Application
Fertilizer application shall be in accordance with the specifications for Best Management Practices (BMP) for the project. Fertilizer application shall be in accordance with the specifications for Best Management Practices (BMP) for the project.

18. Pest Control
Pest control measures shall be installed in accordance with the specifications for Best Management Practices (BMP) for the project. Pest control measures shall be installed in accordance with the specifications for Best Management Practices (BMP) for the project.





WESTERN PACIFIC ENGINEERING & SURVEY
 A TRAKA DEVELOPMENT SERVICES CORPORATION
 1328 E. Miller, P.O. Box 1494, Renton, WA 98057
 Phone: (206) 875-1023 Fax: (206) 875-1398
 Services by registration and license

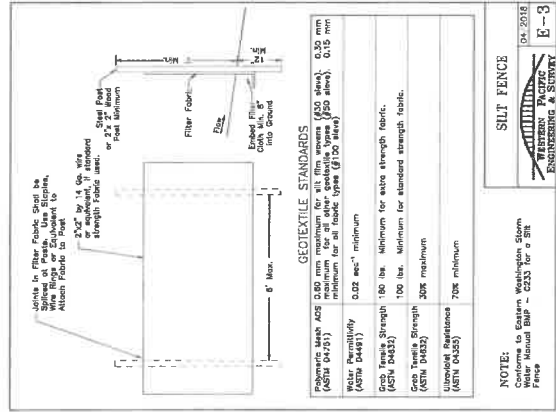
No.	Revision	Date	By

LCU, INC.
Palomino Major Plat, Phase 3
Best Management Practices
Details
 Washington

Designed by: NEN
 Drawn by: Tim/AM
 Checked by: JRM
 Project No.: 18113
 Date: October 2018
 Scale: 1" = N/A
 Vert. 1" = N/A
 Hor. 1" = 10', 8' 10" E

SHEET NO. C3.2
 181827

10/15/18



8" - 16" precast - Lumpy/Limited Rock Shrub-Stepped

Common Name	Scientific Name	Height	Spread	Shrub	Stepped
Spinycholla	Cholla	2	2	1	1
Yucca	Yucca	2	2	1	1
Artemisia	Artemisia	2	2	1	1
Prosopis	Prosopis	2	2	1	1
Stemmed	Stemmed	2	2	1	1
Rock	Rock	2	2	1	1
Wedge	Wedge	2	2	1	1
Shrub	Shrub	2	2	1	1
Rock	Rock	2	2	1	1
Wedge	Wedge	2	2	1	1
Shrub	Shrub	2	2	1	1
Rock	Rock	2	2	1	1
Wedge	Wedge	2	2	1	1
Shrub	Shrub	2	2	1	1
Rock	Rock	2	2	1	1
Wedge	Wedge	2	2	1	1
Shrub	Shrub	2	2	1	1
Rock	Rock	2	2	1	1
Wedge	Wedge	2	2	1	1
Shrub	Shrub	2	2	1	1
Rock	Rock	2	2	1	1
Wedge	Wedge	2	2	1	1
Shrub	Shrub	2	2	1	1
Rock	Rock	2	2	1	1
Wedge	Wedge	2	2	1	1
Shrub	Shrub	2	2	1	1
Rock	Rock	2	2	1	1
Wedge	Wedge	2	2	1	1
Shrub	Shrub	2	2	1	1
Rock	Rock	2	2	1	1
Wedge	Wedge	2	2	1	1
Shrub	Shrub	2	2	1	1
Rock	Rock	2	2	1	1
Wedge	Wedge	2	2	1	1
Shrub	Shrub	2	2	1	1
Rock	Rock	2	2	1	1
Wedge	Wedge	2	2	1	1
Shrub	Shrub	2	2	1	1
Rock	Rock	2	2	1	1
Wedge	Wedge	2	2	1	1
Shrub	Shrub	2	2	1	1
Rock	Rock	2	2	1	1
Wedge	Wedge	2	2	1	1
Shrub	Shrub	2	2	1	1
Rock	Rock	2	2	1	1
Wedge	Wedge	2	2	1	1
Shrub	Shrub	2	2	1	1
Rock	Rock	2	2	1	1
Wedge	Wedge	2	2	1	1
Shrub	Shrub	2	2	1	1
Rock	Rock	2	2	1	1
Wedge	Wedge	2	2	1	1
Shrub	Shrub	2	2	1	1
Rock	Rock	2	2	1	1
Wedge	Wedge	2	2	1	1
Shrub	Shrub	2	2	1	1
Rock	Rock	2	2	1	1
Wedge	Wedge	2	2	1	1
Shrub	Shrub	2	2	1	1
Rock	Rock	2	2	1	1
Wedge	Wedge	2	2	1	1
Shrub	Shrub	2	2	1	1
Rock	Rock	2	2	1	1
Wedge	Wedge	2	2	1	1
Shrub	Shrub	2	2	1	1
Rock	Rock	2	2	1	1
Wedge	Wedge	2	2	1	1
Shrub	Shrub	2	2	1	1
Rock	Rock	2	2	1	1
Wedge	Wedge	2	2	1	1
Shrub	Shrub	2	2	1	1
Rock	Rock	2	2	1	1
Wedge	Wedge	2	2	1	1
Shrub	Shrub	2	2	1	1
Rock	Rock	2	2	1	1
Wedge	Wedge	2	2	1	1
Shrub	Shrub	2	2	1	1
Rock	Rock	2	2	1	1
Wedge	Wedge	2	2	1	1
Shrub	Shrub	2	2	1	1
Rock	Rock	2	2	1	1
Wedge	Wedge	2	2	1	1
Shrub	Shrub	2	2	1	1
Rock	Rock	2	2	1	1
Wedge	Wedge	2	2	1	1
Shrub	Shrub	2	2	1	1
Rock	Rock	2	2	1	1
Wedge	Wedge	2	2	1	1
Shrub	Shrub	2	2	1	1
Rock	Rock	2	2	1	1
Wedge	Wedge	2	2	1	1
Shrub	Shrub	2	2	1	1
Rock	Rock	2	2	1	1
Wedge	Wedge	2	2	1	1
Shrub	Shrub	2	2	1	1
Rock	Rock	2	2	1	1
Wedge	Wedge	2	2	1	1
Shrub	Shrub	2	2	1	1
Rock	Rock	2	2	1	1
Wedge	Wedge	2	2	1	1
Shrub	Shrub	2	2	1	1
Rock	Rock	2	2	1	1
Wedge	Wedge	2	2	1	1
Shrub	Shrub	2	2	1	1
Rock	Rock	2	2	1	1
Wedge	Wedge	2	2	1	1
Shrub	Shrub	2	2	1	1
Rock	Rock	2	2	1	1
Wedge	Wedge	2	2	1	1
Shrub	Shrub	2	2	1	1
Rock	Rock	2	2	1	1
Wedge	Wedge	2	2	1	1
Shrub	Shrub	2	2	1	1
Rock	Rock	2	2	1	1
Wedge	Wedge	2	2	1	1
Shrub	Shrub	2	2	1	1
Rock	Rock	2	2	1	1
Wedge	Wedge	2	2	1	1
Shrub	Shrub	2	2	1	1
Rock	Rock	2	2	1	1
Wedge	Wedge	2	2	1	1
Shrub	Shrub	2	2	1	1
Rock	Rock	2	2	1	1
Wedge	Wedge	2	2	1	1
Shrub	Shrub	2	2	1	1
Rock	Rock	2	2	1	1
Wedge	Wedge	2	2	1	1
Shrub	Shrub	2	2	1	1
Rock	Rock	2	2	1	1
Wedge	Wedge	2	2	1	1
Shrub	Shrub	2	2	1	1
Rock	Rock	2	2	1	1
Wedge	Wedge	2	2	1	1
Shrub	Shrub	2	2	1	1
Rock	Rock	2	2	1	1
Wedge	Wedge	2	2	1	1
Shrub	Shrub	2	2	1	1
Rock	Rock	2	2	1	1
Wedge	Wedge	2	2	1	1
Shrub	Shrub	2	2	1	1
Rock	Rock	2	2	1	1
Wedge	Wedge	2	2	1	1
Shrub	Shrub	2	2	1	1
Rock	Rock	2	2	1	1
Wedge	Wedge	2	2	1	1
Shrub	Shrub	2	2	1	1
Rock	Rock	2	2	1	1
Wedge	Wedge	2	2	1	1
Shrub	Shrub	2	2	1	1
Rock	Rock	2	2	1	1
Wedge	Wedge	2	2	1	1
Shrub	Shrub	2	2	1	1
Rock	Rock	2	2	1	1
Wedge	Wedge	2	2	1	1
Shrub	Shrub	2	2	1	1
Rock	Rock	2	2	1	1
Wedge	Wedge	2	2	1	1
Shrub	Shrub	2	2	1	1
Rock	Rock	2	2	1	1
Wedge	Wedge	2	2	1	1
Shrub	Shrub	2	2	1	1
Rock	Rock	2	2	1	1
Wedge	Wedge	2	2	1	1
Shrub	Shrub	2	2	1	1
Rock	Rock	2	2	1	1
Wedge	Wedge	2	2	1	1
Shrub	Shrub	2	2	1	1
Rock	Rock	2	2	1	1
Wedge	Wedge	2	2	1	1
Shrub	Shrub	2	2	1	1
Rock	Rock	2	2	1	1
Wedge	Wedge	2	2	1	1
Shrub	Shrub	2	2	1	1
Rock	Rock	2	2	1	1
Wedge	Wedge	2	2	1	1
Shrub	Shrub	2	2	1	1
Rock	Rock	2	2	1	1
Wedge	Wedge	2	2	1	1
Shrub	Shrub	2	2	1	1
Rock	Rock	2	2	1	1
Wedge	Wedge	2	2	1	1
Shrub	Shrub	2	2	1	1
Rock	Rock	2	2	1	1
Wedge	Wedge	2	2	1	1
Shrub	Shrub	2	2	1	1
Rock	Rock	2	2	1	1
Wedge	Wedge	2	2	1	1
Shrub	Shrub	2	2	1	1
Rock	Rock	2	2	1	1
Wedge	Wedge	2	2	1	1
Shrub	Shrub	2	2	1	1
Rock	Rock	2	2	1	1
Wedge	Wedge	2	2	1	1
Shrub	Shrub	2	2	1	1
Rock	Rock	2	2	1	1
Wedge	Wedge	2	2	1	1
Shrub	Shrub	2	2	1	1
Rock	Rock	2	2	1	1
Wedge	Wedge	2	2	1	1
Shrub	Shrub	2	2	1	1
Rock	Rock	2	2	1	1
Wedge	Wedge	2	2	1	1
Shrub	Shrub	2	2	1	1
Rock	Rock	2	2	1	1
Wedge	Wedge	2	2	1	1
Shrub	Shrub	2	2	1	1
Rock	Rock	2	2	1	1
Wedge	Wedge	2	2	1	1
Shrub	Shrub	2	2	1	1
Rock	Rock	2	2	1	1
Wedge	Wedge	2	2	1	1
Shrub	Shrub	2	2	1	1
Rock	Rock	2	2	1	1
Wedge	Wedge	2	2	1	1
Shrub	Shrub	2	2	1	1
Rock	Rock	2	2	1	1
Wedge	Wedge	2	2	1	1
Shrub	Shrub	2	2	1	1
Rock	Rock	2	2	1	1
Wedge	W				

PRIVATE ROAD NETWORK DRAWINGS FOR PALOMINO MAJOR PLAT, PHASE II

Prepared By

WESTERN PACIFIC ENGINEERING & SURVEY



WESTERN PACIFIC ENGINEERING & SURVEY
 1328 E. Hunter Place, Leavenworth, Washington
 A REGISTERED PROFESSIONAL ENGINEERING CORPORATION
 License No. 10072-10073 P.05072-10073

No.	Description	Date	By
01	County Review	02/15/18	MMN
02	County Review	02/15/18	MMN

PALOMINO MAJOR PLAT, PHASE II ROAN DRIVE IMPROVEMENTS Cover Sheet

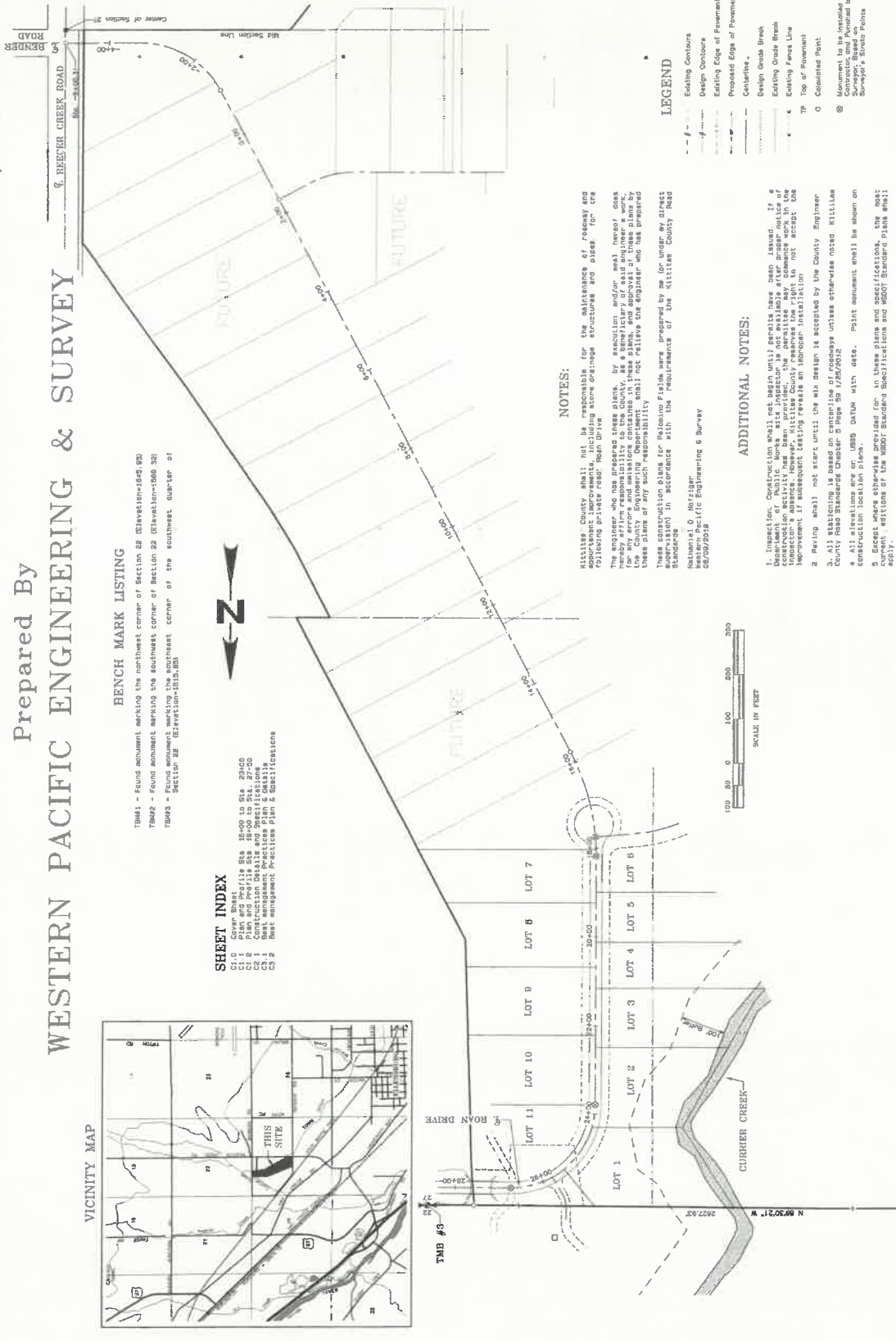
Designed by: MMN
 Checked by: MMN
 Project No.: 18119
 Date: July 2018
 Scale: 1" = 100'
 Sheet: 1 of 2
 Rev: 27, Y 10, N 6, 10, 2

SHEET NO. C1.0
 101027



BENCH MARK LISTING
 TBM#1 - Found monument marking the northwest corner of Section 22 (Elevation=165.84)
 TBM#2 - Found monument marking the southeast corner of Section 22 (Elevation=166.38)
 TBM#3 - Found monument marking the southeast corner of the southeast quarter of Section 22 (Elevation=164.83)

SHEET INDEX
 C1.1 Plan and Profile Sta 15+00 to Sta 23+00
 C1.2 Plan and Profile Sta 23+00 to Sta 27+00
 C1.3 Plan and Profile Sta 27+00 to Sta 31+00
 C1.4 Best Management Practices Plan & Details
 C1.5 Best Management Practices Plan & Details



NOTES:
 Kittitas County shall not be responsible for the maintenance of roadway and equipment improvements, including stone drainage structures and pipes for the existing private road, Roan Drive.
 The contractor shall be responsible for obtaining and installing all necessary permits and approvals for these plans, and approval of these plans by the county and state does not constitute an approval of these plans by the contractor. The contractor shall not rely on the engineer and his prepared plans for any such responsibility.
 These construction plans for Palomino Fields were prepared by me for under my direct supervision in accordance with the requirements of the Kittitas County Road Standards.
 Nathaniel O. Metzger
 Western Pacific Engineering & Survey
 02/07/2018

ADDITIONAL NOTES:

1. Inspection. Construction shall not begin until permits have been issued. If a Department of Public Works site inspector is not available after proper notice of inspection is given, the contractor shall notify the County Engineer in writing. The inspector's address is: Kittitas County, 1000 N. 1st St., P.O. Box 1000, Leavenworth, WA 98941. If subsequent testing reveals an improper installation, the contractor shall be responsible for the cost of rework and any other costs incurred by the County Engineer.
2. Paving shall not start until the site design is accepted by the County Engineer.
3. All stationing is based on centerline of roadway unless otherwise noted. Kittitas County Road Standards Chapter 5 Page 59 1/26/2012.
4. All elevations are on UMS datum with date. Point monument shall be shown on drawings and shall be provided for in these plans and specifications. The shall current editions of the WDOT Standard Specifications and WDOT Standard Plans shall apply.

LEGEND

- - - Existing Contours
- - - Design Contours
- - - Existing Edge of Pavement
- - - Proposed Edge of Pavement
- - - Centerline
- - - Design Grade Break
- - - Existing Grade Break
- - - Existing Fence Line
- - - Top of Pavement
- - - Coped Point
- ⊙ Monument to be installed by Surveyor. Based on Surveyor's Station Points



These plans have been reviewed by Kittitas County Department of Public Works and have been accepted for complying with the requirements of Kittitas County Road Standards.
 County Engineer
 Date: 08-28-2018



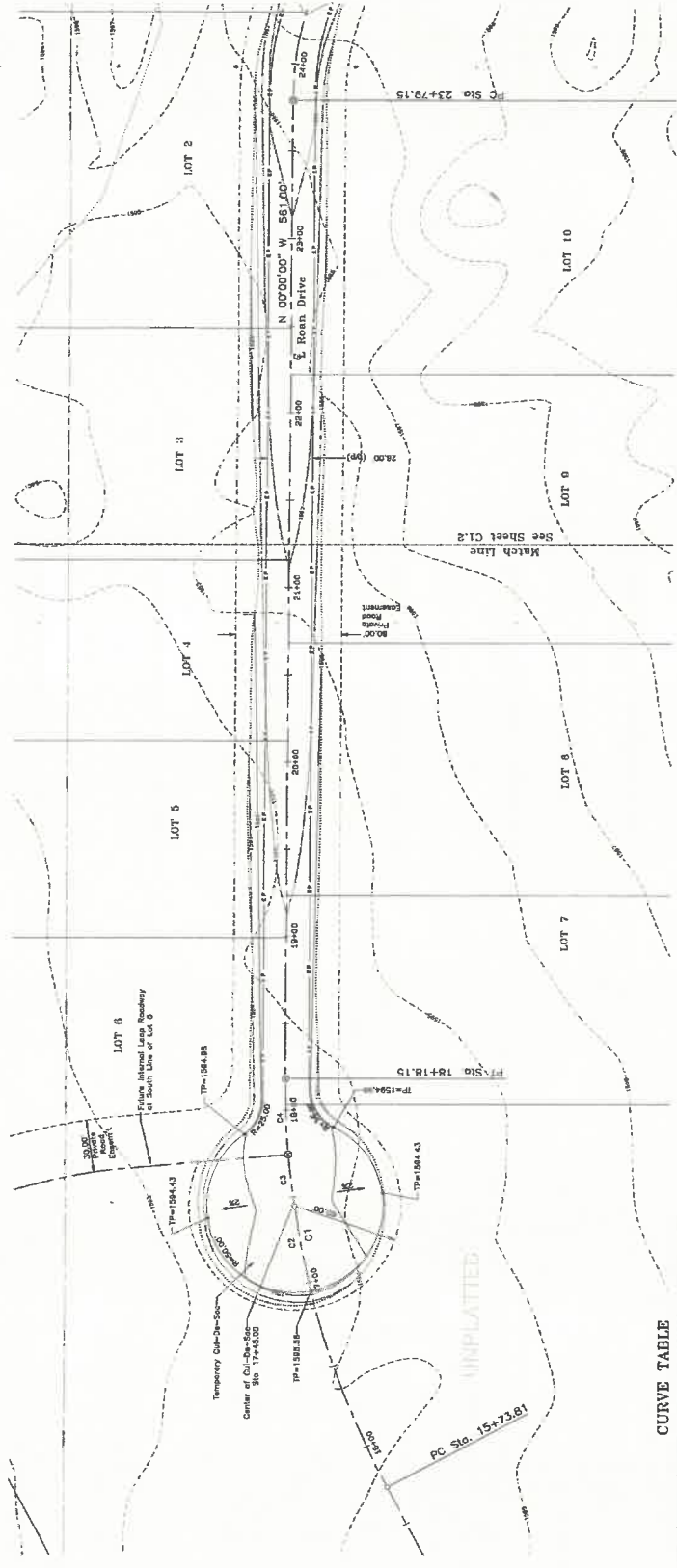
WESTERN PACIFIC
ENGINEERING & SURVEY
A TRISA CORPORATION SERVICE CORPORATION
1328 E. Palmer Place, Moses Lake, Washington
P: (509)785-1023 F: (509)785-1288

No.	Revision	Date	By
01	County Review	08/19	NOM
02	County Review	08/16	NOM

PALOMINO MAJOR PLAT, PHASE 2
ROAN DRIVE IMPROVEMENTS
Plan and Profile Sta. 16+00 to Sta. 23+00
Kittitas County, Washington

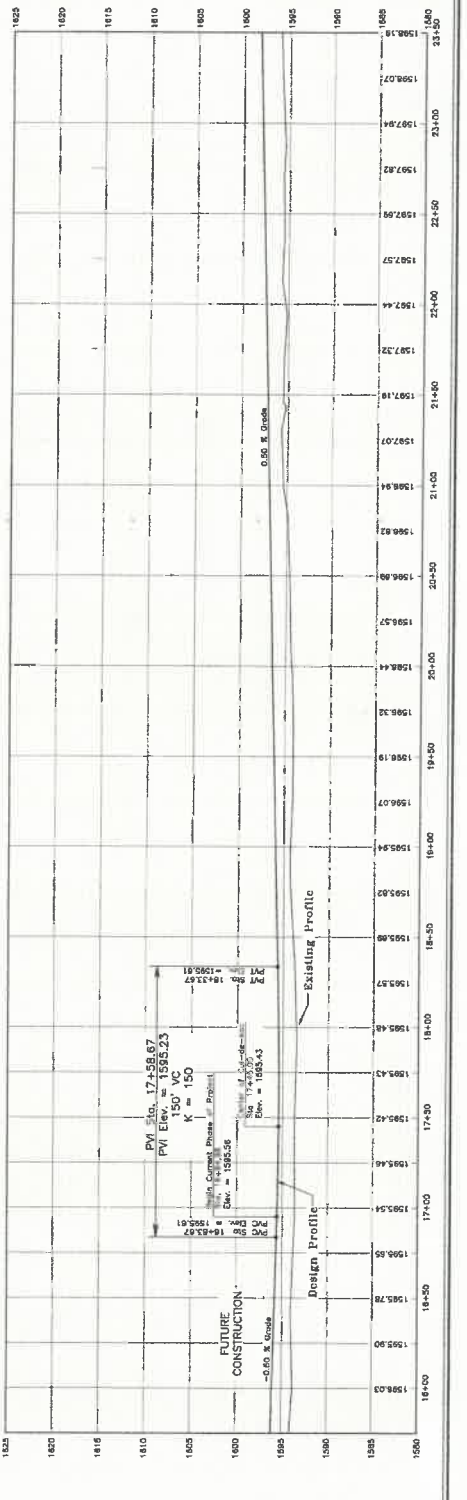
Drawn by: T.M./NHR
Checked by: T.M./NHR
Project No.: 18118
Date: April 2018
Scale: 1" = 40'
Sheet: 1" = 40'
SHEET NO. C1.1

181887



CURVE TABLE

LINE	PC STA.	PT STA.	CHORD BEARING	CURVE DATA	CHORD DIST.
C1	16+00.00	17+00.00	N 45° 00' 00" W	R 150.00'	124.86'
C2	17+00.00	18+00.00	N 45° 00' 00" W	R 150.00'	124.86'
C3	18+00.00	19+00.00	N 45° 00' 00" W	R 150.00'	124.86'



W
9-28-18

181 -- Project Name: Palomino Major Plat - Ph. 2 - Proj. No. 18118; Drawing Title: Plan and Profile Sta. 16+00 to Sta. 23+00

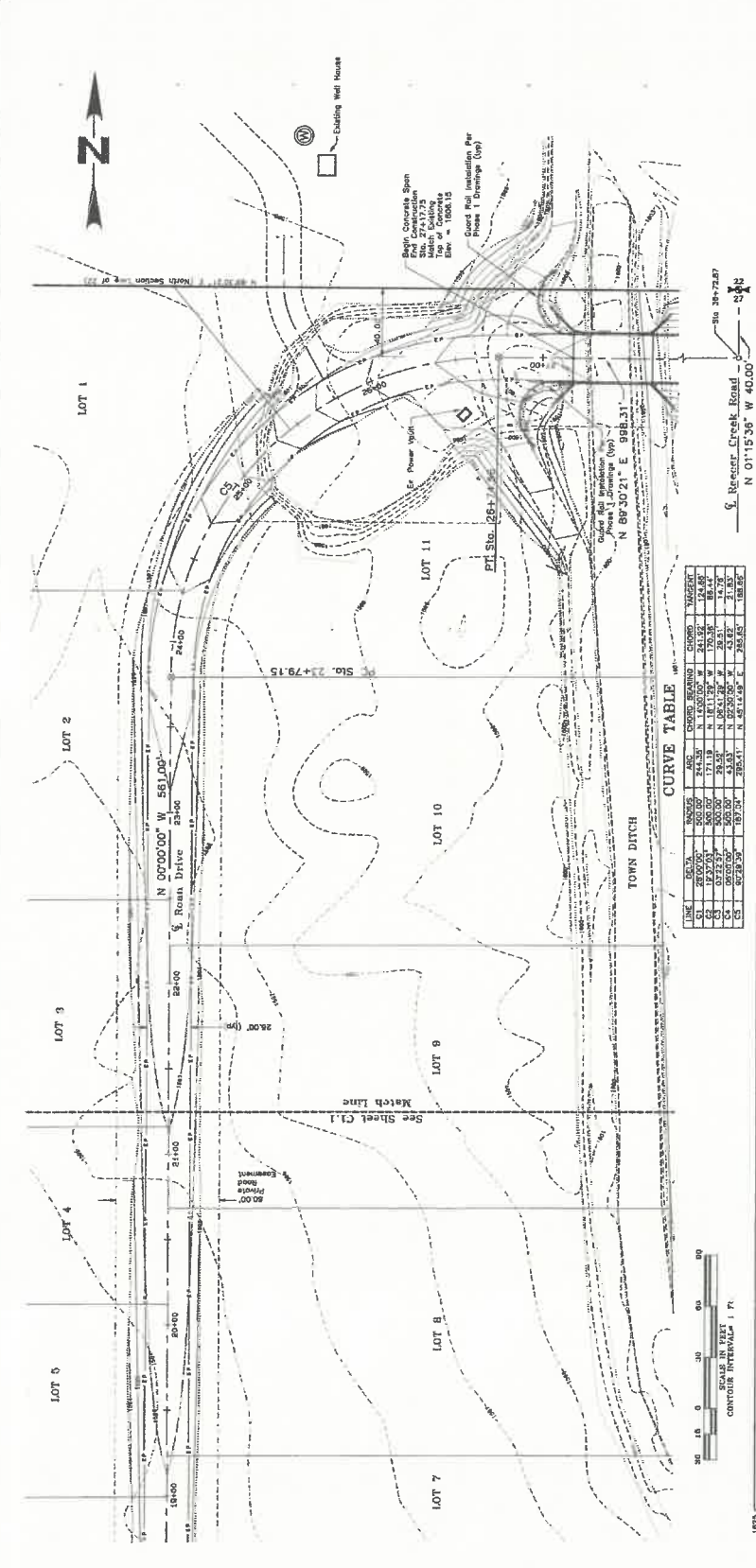


**WESTERN PACIFIC
ENGINEERING & SURVEY**
A LICENSED PROFESSIONAL SERVICE CORPORATION
1328 E. Irvine Place, Roseburg, Oregon 97470
(503) 755-1023 (503) 755-1288

No.	Description	Date	By
01	County Review	08/18	KMH
02	County Review - 2	08/18	KMH

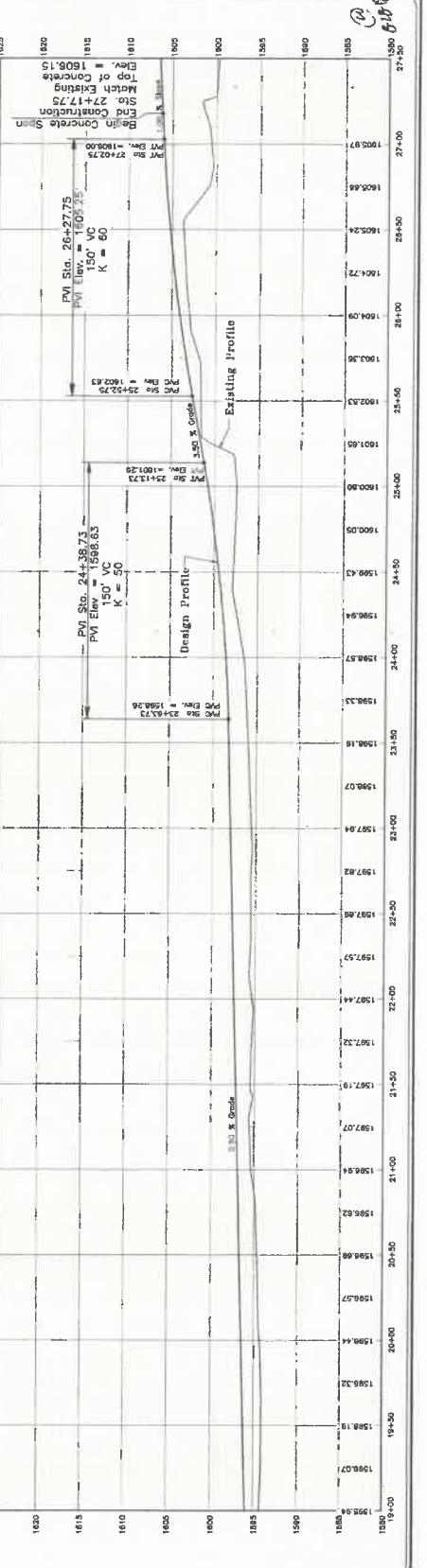
LCU, INC.
PALOMINO MAJOR PLAT, PHASE 2
ROAD DRIVE IMPROVEMENTS
Plan and Profile Sta. 19+00 to Sta. 27+50

SHEET NO. C1.2
1811827



CURVE TABLE

LINE	PC	PVI	PT	CHORD BEARING	CHORD	WAGNER
1	19+00.00	19+00.00	19+00.00	N 0°00'00" W	0.00	0.00
2	19+00.00	19+00.00	19+00.00	N 0°00'00" W	0.00	0.00
3	19+00.00	19+00.00	19+00.00	N 0°00'00" W	0.00	0.00
4	19+00.00	19+00.00	19+00.00	N 0°00'00" W	0.00	0.00
5	19+00.00	19+00.00	19+00.00	N 0°00'00" W	0.00	0.00
6	19+00.00	19+00.00	19+00.00	N 0°00'00" W	0.00	0.00
7	19+00.00	19+00.00	19+00.00	N 0°00'00" W	0.00	0.00
8	19+00.00	19+00.00	19+00.00	N 0°00'00" W	0.00	0.00
9	19+00.00	19+00.00	19+00.00	N 0°00'00" W	0.00	0.00
10	19+00.00	19+00.00	19+00.00	N 0°00'00" W	0.00	0.00
11	19+00.00	19+00.00	19+00.00	N 0°00'00" W	0.00	0.00
12	19+00.00	19+00.00	19+00.00	N 0°00'00" W	0.00	0.00
13	19+00.00	19+00.00	19+00.00	N 0°00'00" W	0.00	0.00
14	19+00.00	19+00.00	19+00.00	N 0°00'00" W	0.00	0.00
15	19+00.00	19+00.00	19+00.00	N 0°00'00" W	0.00	0.00
16	19+00.00	19+00.00	19+00.00	N 0°00'00" W	0.00	0.00
17	19+00.00	19+00.00	19+00.00	N 0°00'00" W	0.00	0.00
18	19+00.00	19+00.00	19+00.00	N 0°00'00" W	0.00	0.00
19	19+00.00	19+00.00	19+00.00	N 0°00'00" W	0.00	0.00
20	19+00.00	19+00.00	19+00.00	N 0°00'00" W	0.00	0.00
21	19+00.00	19+00.00	19+00.00	N 0°00'00" W	0.00	0.00
22	19+00.00	19+00.00	19+00.00	N 0°00'00" W	0.00	0.00
23	19+00.00	19+00.00	19+00.00	N 0°00'00" W	0.00	0.00
24	19+00.00	19+00.00	19+00.00	N 0°00'00" W	0.00	0.00
25	19+00.00	19+00.00	19+00.00	N 0°00'00" W	0.00	0.00
26	19+00.00	19+00.00	19+00.00	N 0°00'00" W	0.00	0.00
27	19+00.00	19+00.00	19+00.00	N 0°00'00" W	0.00	0.00
28	19+00.00	19+00.00	19+00.00	N 0°00'00" W	0.00	0.00
29	19+00.00	19+00.00	19+00.00	N 0°00'00" W	0.00	0.00
30	19+00.00	19+00.00	19+00.00	N 0°00'00" W	0.00	0.00
31	19+00.00	19+00.00	19+00.00	N 0°00'00" W	0.00	0.00
32	19+00.00	19+00.00	19+00.00	N 0°00'00" W	0.00	0.00
33	19+00.00	19+00.00	19+00.00	N 0°00'00" W	0.00	0.00
34	19+00.00	19+00.00	19+00.00	N 0°00'00" W	0.00	0.00
35	19+00.00	19+00.00	19+00.00	N 0°00'00" W	0.00	0.00
36	19+00.00	19+00.00	19+00.00	N 0°00'00" W	0.00	0.00
37	19+00.00	19+00.00	19+00.00	N 0°00'00" W	0.00	0.00
38	19+00.00	19+00.00	19+00.00	N 0°00'00" W	0.00	0.00
39	19+00.00	19+00.00	19+00.00	N 0°00'00" W	0.00	0.00
40	19+00.00	19+00.00	19+00.00	N 0°00'00" W	0.00	0.00
41	19+00.00	19+00.00	19+00.00	N 0°00'00" W	0.00	0.00
42	19+00.00	19+00.00	19+00.00	N 0°00'00" W	0.00	0.00
43	19+00.00	19+00.00	19+00.00	N 0°00'00" W	0.00	0.00
44	19+00.00	19+00.00	19+00.00	N 0°00'00" W	0.00	0.00
45	19+00.00	19+00.00	19+00.00	N 0°00'00" W	0.00	0.00
46	19+00.00	19+00.00	19+00.00	N 0°00'00" W	0.00	0.00
47	19+00.00	19+00.00	19+00.00	N 0°00'00" W	0.00	0.00
48	19+00.00	19+00.00	19+00.00	N 0°00'00" W	0.00	0.00
49	19+00.00	19+00.00	19+00.00	N 0°00'00" W	0.00	0.00
50	19+00.00	19+00.00	19+00.00	N 0°00'00" W	0.00	0.00
51	19+00.00	19+00.00	19+00.00	N 0°00'00" W	0.00	0.00
52	19+00.00	19+00.00	19+00.00	N 0°00'00" W	0.00	0.00
53	19+00.00	19+00.00	19+00.00	N 0°00'00" W	0.00	0.00
54	19+00.00	19+00.00	19+00.00	N 0°00'00" W	0.00	0.00
55	19+00.00	19+00.00	19+00.00	N 0°00'00" W	0.00	0.00
56	19+00.00	19+00.00	19+00.00	N 0°00'00" W	0.00	0.00
57	19+00.00	19+00.00	19+00.00	N 0°00'00" W	0.00	0.00
58	19+00.00	19+00.00	19+00.00	N 0°00'00" W	0.00	0.00
59	19+00.00	19+00.00	19+00.00	N 0°00'00" W	0.00	0.00
60	19+00.00	19+00.00	19+00.00	N 0°00'00" W	0.00	0.00
61	19+00.00	19+00.00	19+00.00	N 0°00'00" W	0.00	0.00
62	19+00.00	19+00.00	19+00.00	N 0°00'00" W	0.00	0.00
63	19+00.00	19+00.00	19+00.00	N 0°00'00" W	0.00	0.00
64	19+00.00	19+00.00	19+00.00	N 0°00'00" W	0.00	0.00
65	19+00.00	19+00.00	19+00.00	N 0°00'00" W	0.00	0.00
66	19+00.00	19+00.00	19+00.00	N 0°00'00" W	0.00	0.00
67	19+00.00	19+00.00	19+00.00	N 0°00'00" W	0.00	0.00
68	19+00.00	19+00.00	19+00.00	N 0°00'00" W	0.00	0.00
69	19+00.00	19+00.00	19+00.00	N 0°00'00" W	0.00	0.00
70	19+00.00	19+00.00	19+00.00	N 0°00'00" W	0.00	0.00
71	19+00.00	19+00.00	19+00.00	N 0°00'00" W	0.00	0.00
72	19+00.00	19+00.00	19+00.00	N 0°00'00" W	0.00	0.00
73	19+00.00	19+00.00	19+00.00	N 0°00'00" W	0.00	0.00
74	19+00.00	19+00.00	19+00.00	N 0°00'00" W	0.00	0.00
75	19+00.00	19+00.00	19+00.00	N 0°00'00" W	0.00	0.00
76	19+00.00	19+00.00	19+00.00	N 0°00'00" W	0.00	0.00
77	19+00.00	19+00.00	19+00.00	N 0°00'00" W	0.00	0.00
78	19+00.00	19+00.00	19+00.00	N 0°00'00" W	0.00	0.00
79	19+00.00	19+00.00	19+00.00	N 0°00'00" W	0.00	0.00
80	19+00.00	19+00.00	19+00.00	N 0°00'00" W	0.00	0.00
81	19+00.00	19+00.00	19+00.00	N 0°00'00" W	0.00	0.00
82	19+00.00	19+00.00	19+00.00	N 0°00'00" W	0.00	0.00
83	19+00.00	19+00.00	19+00.00	N 0°00'00" W	0.00	0.00
84	19+00.00	19+00.00	19+00.00	N 0°00'00" W	0.00	0.00
85	19+00.00	19+00.00	19+00.00	N 0°00'00" W	0.00	0.00
86	19+00.00	19+00.00	19+00.00	N 0°00'00" W	0.00	0.00
87	19+00.00	19+00.00	19+00.00	N 0°00'00" W	0.00	0.00
88	19+00.00	19+00.00	19+00.00	N 0°00'00" W	0.00	0.00
89	19+00.00	19+00.00	19+00.00	N 0°00'00" W	0.00	0.00
90	19+00.00	19+00.00	19+00.00	N 0°00'00" W	0.00	0.00
91	19+00.00	19+00.00	19+00.00	N 0°00'00" W	0.00	0.00
92	19+00.00	19+00.00	19+00.00	N 0°00'00" W	0.00	0.00
93	19+00.00	19+00.00	19+00.00	N 0°00'00" W	0.00	0.00
94	19+00.00	19+00.00	19+00.00	N 0°00'00" W	0.00	0.00
95	19+00.00	19+00.00	19+00.00	N 0°00'00" W	0.00	0.00
96	19+00.00	19+00.00	19+00.00	N 0°00'00" W	0.00	0.00
97	19+00.00	19+00.00	19+00.00	N 0°00'00" W	0.00	0.00
98	19+00.00	19+00.00	19+00.00	N 0°00'00" W	0.00	0.00
99	19+00.00	19+00.00	19+00.00	N 0°00'00" W	0.00	0.00
100	19+00.00	19+00.00	19+00.00	N 0°00'00" W	0.00	0.00



THIS DRAWING IS THE PROPERTY OF WESTERN PACIFIC ENGINEERING & SURVEY. IT IS TO BE USED ONLY FOR THE PROJECT AND SITE SPECIFICALLY IDENTIFIED HEREON. ANY REUSE OR MODIFICATION OF THIS DRAWING WITHOUT THE WRITTEN CONSENT OF WESTERN PACIFIC ENGINEERING & SURVEY IS STRICTLY PROHIBITED.

GENERAL SPECIFICATIONS

The Washington State Department of Transportation standard edition as provided by the State and the Kittitas County Public Works Department shall be used for all construction. The Public Works Department may have part of the contract documents amended in any way that does not conflict with the Washington State Department of Transportation standard edition. If the contractor discovers any conflict, error, ambiguity, or omission in the contract documents, he shall immediately, in writing, to Western Pacific Engineering & Survey, Inc. (WPE&S) or the Kittitas County Public Works Department. Specifications shall be obtained at the following web site: <http://www.wednet.gov/publications/manual/>

2-02.1.1. GENERAL CONTRACTOR'S OBLIGATIONS:
 Before commencing construction, the contractor shall have a copy of the contract documents, including the approved construction costs as revised by the Public Works Director, on the job site. The contractor shall be responsible for obtaining the contract documents and for providing a copy to all subcontractors. The contractor shall be responsible for obtaining the contract documents and for providing a copy to all subcontractors. The contractor shall be responsible for obtaining the contract documents and for providing a copy to all subcontractors.

2-02.1.2. PREPARATION AND PROTECTION OF EXISTING UTILITIES:
 This section is supplemented by adding the following: The contractor shall be responsible for identifying and protecting all existing utilities. The contractor shall be responsible for identifying and protecting all existing utilities. The contractor shall be responsible for identifying and protecting all existing utilities.

2-02.1.3. PROTECTION AND RESTORATION OF EXISTING UTILITIES:
 This section is supplemented by adding the following: The contractor shall be responsible for identifying and protecting all existing utilities. The contractor shall be responsible for identifying and protecting all existing utilities. The contractor shall be responsible for identifying and protecting all existing utilities.

2-02.1.4. UTILITIES AND SIMILAR FACILITIES:
 This section is supplemented by adding the following: The contractor shall be responsible for identifying and protecting all existing utilities. The contractor shall be responsible for identifying and protecting all existing utilities. The contractor shall be responsible for identifying and protecting all existing utilities.

2-02.1.5. CONSTRUCTION AND PROTECTION OF EXISTING UTILITIES:
 This section is supplemented by adding the following: The contractor shall be responsible for identifying and protecting all existing utilities. The contractor shall be responsible for identifying and protecting all existing utilities. The contractor shall be responsible for identifying and protecting all existing utilities.

2-02.1.6. CONSTRUCTION AND PROTECTION OF EXISTING UTILITIES:
 This section is supplemented by adding the following: The contractor shall be responsible for identifying and protecting all existing utilities. The contractor shall be responsible for identifying and protecting all existing utilities. The contractor shall be responsible for identifying and protecting all existing utilities.

2-02.1.7. CONSTRUCTION AND PROTECTION OF EXISTING UTILITIES:
 This section is supplemented by adding the following: The contractor shall be responsible for identifying and protecting all existing utilities. The contractor shall be responsible for identifying and protecting all existing utilities. The contractor shall be responsible for identifying and protecting all existing utilities.

2-02.1.8. CONSTRUCTION AND PROTECTION OF EXISTING UTILITIES:
 This section is supplemented by adding the following: The contractor shall be responsible for identifying and protecting all existing utilities. The contractor shall be responsible for identifying and protecting all existing utilities. The contractor shall be responsible for identifying and protecting all existing utilities.

2-02.1.9. CONSTRUCTION AND PROTECTION OF EXISTING UTILITIES:
 This section is supplemented by adding the following: The contractor shall be responsible for identifying and protecting all existing utilities. The contractor shall be responsible for identifying and protecting all existing utilities. The contractor shall be responsible for identifying and protecting all existing utilities.

2-02.1.10. CONSTRUCTION AND PROTECTION OF EXISTING UTILITIES:
 This section is supplemented by adding the following: The contractor shall be responsible for identifying and protecting all existing utilities. The contractor shall be responsible for identifying and protecting all existing utilities. The contractor shall be responsible for identifying and protecting all existing utilities.

2-02.1.11. CONSTRUCTION AND PROTECTION OF EXISTING UTILITIES:
 This section is supplemented by adding the following: The contractor shall be responsible for identifying and protecting all existing utilities. The contractor shall be responsible for identifying and protecting all existing utilities. The contractor shall be responsible for identifying and protecting all existing utilities.

2-02.1.12. CONSTRUCTION AND PROTECTION OF EXISTING UTILITIES:
 This section is supplemented by adding the following: The contractor shall be responsible for identifying and protecting all existing utilities. The contractor shall be responsible for identifying and protecting all existing utilities. The contractor shall be responsible for identifying and protecting all existing utilities.

2-02.1.13. CONSTRUCTION AND PROTECTION OF EXISTING UTILITIES:
 This section is supplemented by adding the following: The contractor shall be responsible for identifying and protecting all existing utilities. The contractor shall be responsible for identifying and protecting all existing utilities. The contractor shall be responsible for identifying and protecting all existing utilities.

2-02.1.14. CONSTRUCTION AND PROTECTION OF EXISTING UTILITIES:
 This section is supplemented by adding the following: The contractor shall be responsible for identifying and protecting all existing utilities. The contractor shall be responsible for identifying and protecting all existing utilities. The contractor shall be responsible for identifying and protecting all existing utilities.

2-02.1.15. CONSTRUCTION AND PROTECTION OF EXISTING UTILITIES:
 This section is supplemented by adding the following: The contractor shall be responsible for identifying and protecting all existing utilities. The contractor shall be responsible for identifying and protecting all existing utilities. The contractor shall be responsible for identifying and protecting all existing utilities.

2-02.1.16. CONSTRUCTION AND PROTECTION OF EXISTING UTILITIES:
 This section is supplemented by adding the following: The contractor shall be responsible for identifying and protecting all existing utilities. The contractor shall be responsible for identifying and protecting all existing utilities. The contractor shall be responsible for identifying and protecting all existing utilities.

2-02.1.17. CONSTRUCTION AND PROTECTION OF EXISTING UTILITIES:
 This section is supplemented by adding the following: The contractor shall be responsible for identifying and protecting all existing utilities. The contractor shall be responsible for identifying and protecting all existing utilities. The contractor shall be responsible for identifying and protecting all existing utilities.

2-02.1.18. CONSTRUCTION AND PROTECTION OF EXISTING UTILITIES:
 This section is supplemented by adding the following: The contractor shall be responsible for identifying and protecting all existing utilities. The contractor shall be responsible for identifying and protecting all existing utilities. The contractor shall be responsible for identifying and protecting all existing utilities.

2-02.1.19. CONSTRUCTION AND PROTECTION OF EXISTING UTILITIES:
 This section is supplemented by adding the following: The contractor shall be responsible for identifying and protecting all existing utilities. The contractor shall be responsible for identifying and protecting all existing utilities. The contractor shall be responsible for identifying and protecting all existing utilities.

2-02.1.20. CONSTRUCTION AND PROTECTION OF EXISTING UTILITIES:
 This section is supplemented by adding the following: The contractor shall be responsible for identifying and protecting all existing utilities. The contractor shall be responsible for identifying and protecting all existing utilities. The contractor shall be responsible for identifying and protecting all existing utilities.

2-02.1.21. CONSTRUCTION AND PROTECTION OF EXISTING UTILITIES:
 This section is supplemented by adding the following: The contractor shall be responsible for identifying and protecting all existing utilities. The contractor shall be responsible for identifying and protecting all existing utilities. The contractor shall be responsible for identifying and protecting all existing utilities.

2-02.1.22. CONSTRUCTION AND PROTECTION OF EXISTING UTILITIES:
 This section is supplemented by adding the following: The contractor shall be responsible for identifying and protecting all existing utilities. The contractor shall be responsible for identifying and protecting all existing utilities. The contractor shall be responsible for identifying and protecting all existing utilities.

2-02.1.23. CONSTRUCTION AND PROTECTION OF EXISTING UTILITIES:
 This section is supplemented by adding the following: The contractor shall be responsible for identifying and protecting all existing utilities. The contractor shall be responsible for identifying and protecting all existing utilities. The contractor shall be responsible for identifying and protecting all existing utilities.



WESTERN PACIFIC ENGINEERING & SURVEY
 1324 E. Knapier Road, Moses Lake, Washington 99027
 Phone: (509) 765-1023 Fax: (509) 765-1030

No.	Description	Date	By
01	Contract Review	06/16/16	NMN
02	Contract Review	08/16/16	NMN

Construction Details and Specifications
PALMINO MAJOR PLANT, PHASE 2
LCU, INC.
 Kittitas County Washington

Designed by: NOK
 Checked by: NOK
 Project No.: 14113
 Date: April 2016
 Scale: 1" = 8'-0"
 Sheet: 1 of 2
 See also sheets 1 & 2

SHEET NO. C2.1
 181827



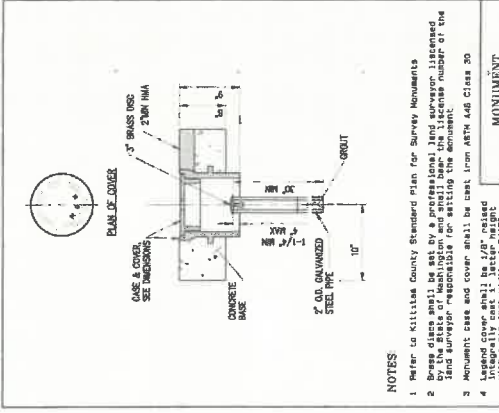
2-02.1.24. CONSTRUCTION AND PROTECTION OF EXISTING UTILITIES:
 This section is supplemented by adding the following: The contractor shall be responsible for identifying and protecting all existing utilities. The contractor shall be responsible for identifying and protecting all existing utilities. The contractor shall be responsible for identifying and protecting all existing utilities.

2-02.1.25. CONSTRUCTION AND PROTECTION OF EXISTING UTILITIES:
 This section is supplemented by adding the following: The contractor shall be responsible for identifying and protecting all existing utilities. The contractor shall be responsible for identifying and protecting all existing utilities. The contractor shall be responsible for identifying and protecting all existing utilities.

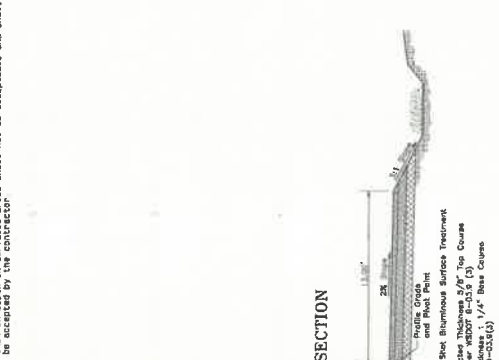
2-02.1.26. CONSTRUCTION AND PROTECTION OF EXISTING UTILITIES:
 This section is supplemented by adding the following: The contractor shall be responsible for identifying and protecting all existing utilities. The contractor shall be responsible for identifying and protecting all existing utilities. The contractor shall be responsible for identifying and protecting all existing utilities.

2-02.1.27. CONSTRUCTION AND PROTECTION OF EXISTING UTILITIES:
 This section is supplemented by adding the following: The contractor shall be responsible for identifying and protecting all existing utilities. The contractor shall be responsible for identifying and protecting all existing utilities. The contractor shall be responsible for identifying and protecting all existing utilities.

2-02.1.28. CONSTRUCTION AND PROTECTION OF EXISTING UTILITIES:
 This section is supplemented by adding the following: The contractor shall be responsible for identifying and protecting all existing utilities. The contractor shall be responsible for identifying and protecting all existing utilities. The contractor shall be responsible for identifying and protecting all existing utilities.



NOTES
 1. Refer to Kittitas County Standard Plan for Survey Monuments
 2. Brass discs shall be set by a professional land surveyor licensed by the State of Washington and shall bear the license number of the land surveyor responsible for setting the monument.
 3. Monument case and cover shall be cast from ASTM A48 Class 30 cast iron with a minimum wall thickness of 1/4" and a minimum diameter of 10 inches.
 4. The brass disc shall be oriented so that the face of the monument is facing north.



NOTES
 1. The Roadway shall be built up from the native grade. Stormwater collection cross shall not be dug out or below native grade.
 2. Vegetation Plant Drought resistant low growing grasses shall be planted in the stormwater collection area.